

# Otago South River Care



**SEPTEMBER 2021**

At the Annual General Meeting (AGM) on 29 July, Otago South River Care announced a new three year project funded by the Ministry of Primary Industries (MPI) which will provide \$1.8 million from their Sustainable Food and Fibre Futures fund.

The project aims to improve ecosystem health and freshwater quality in South Otago, enhance farmer leadership, and increase value for food and fibre products through implementing environmental practices that align with consumer expectations for high value food and fibre.



**Follow us for project updates and event details at Otago South River Care**

## GET INVOLVED:

There is a series of events coming up and opportunities for farmers to get involved in riparian planting, sediment traps, wetlands and bank battering initiatives. Please contact us if you are keen to trial any of these at your place.



*"Our vision is that the learnings from this project can be implemented as an exemplar model for councils and farmers in other regions".* Steve Penno, MPI Director of Investment Programmes



## CONTACT US:



**Project Manager**  
**Lloyd McCall**  
**027 248 9090**



**Project coordinator**  
**Craig Simpson**  
**027 286 4611**



**Project coordinator**  
**Rebecca Begg**  
**021 136 765**

# Whats been happening:



WOMENS ENVIRO EVENING

The Clinton hall was abuzz in May with the Women's Enviro Evening. There was a great turnout for the guest speakers Kirsty McGregor and Dan Steel with Rowena Duncum as MC despite the snowy weather conditions.



## TOKOMAIRO WETLAND PROJECT

The Tokomairiro Wetland Project with funding from MPI's Jobs for Nature Project has finished planting approximately 10,000 plants covering 3.5ha. There is now a new sign up at the planting site. The next step is to undertake weed control at the site.



## Lovells Flat

The jobs for Nature Fund has also supported riparian planting at Lovells Flat. Look out for the promotional signs by the Old Sod cottage on your way to Dunedin next time you're passing that way.



## Waitahuna

A school stream health day with the Waitahuna School in late May was followed up with a Catchment Group meeting to discuss farm plans. A toasty fire was appreciated on a brisk day.



## Owaka Valley

350 plus plants have been planted in the Owaka Valley at a roadside site. Thanks to support from Jobs for Nature and the Tokomairiro Catchment Group for the plants. A sign will be going up here soon.



# Whats coming up:

## Collecting our water quality and stream health monitoring information:

- In stream water monitoring sites
- Macroinvertebrate (MCI) assessments

## Engaging our tamariki:

- Working with local schools to adopt a stream
- Urban connection– bringing school classes to our catchments



## Encouraging innovation:

Exploring new ideas and methods for environmental management in the area

## Look out for our events over the next 9 months:

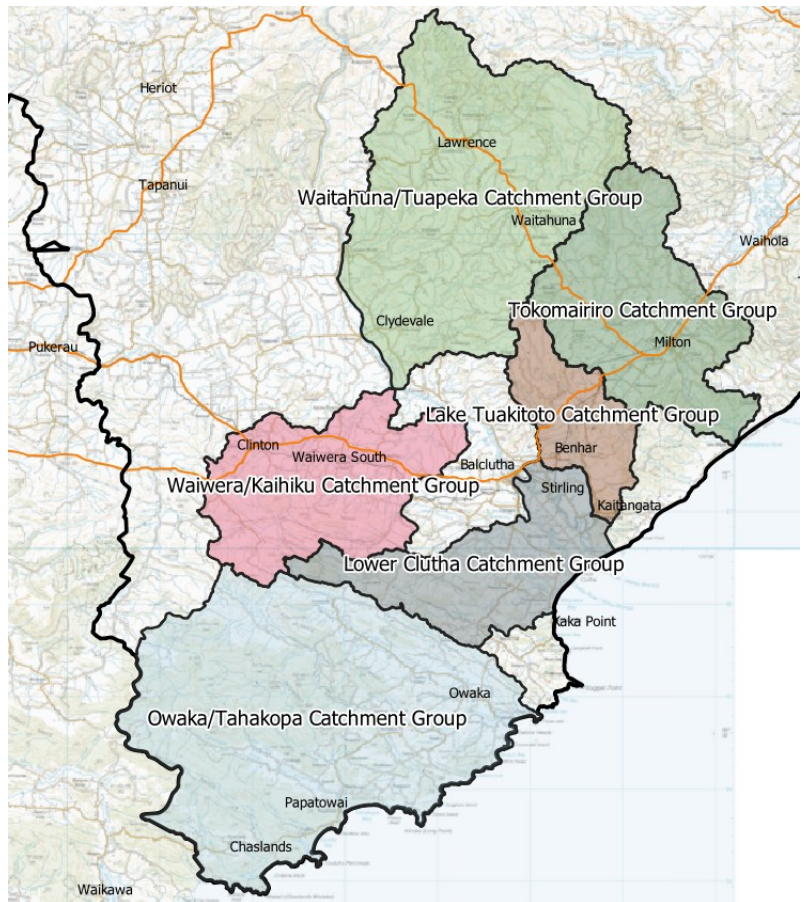
- Technical experts
- A community evening event

## Market research:

- How can we maximise returns on our food and fibre products?

## Farmer led catchment groups:

- On farm field days
- Assisting with riparian planting
- Trialing stream erosion mitigations
- Installing sediment traps and wetlands



This map shows our proposed catchment Group areas. If you have any comments, we would love to hear from you. Come along to your catchment group meeting to find out more.



## Farmer survey:

Look out for our farmer survey which is coming soon. This is to help us with baseline information and collect any ideas you have for our project.



Primary Contact: \_\_\_\_\_

Company/Farm Name: \_\_\_\_\_

Primary Farm Activity: \_\_\_\_\_

*e.g. sheep and beef/dairy*

Physical Address: \_\_\_\_\_

Postal Address: \_\_\_\_\_

*(if different to above)*

Please tick preferred method of contact

☐ Phone: \_\_\_\_\_ ☐ Mobile: \_\_\_\_\_ ☐ Text

☐ Email: \_\_\_\_\_

Additional Contact Persons: \_\_\_\_\_

**Annual Membership Fee 2021/2022 (1 July 2021-30 June 2022)**

**\$230 (inc GST)**

***Due by 30 November 2021***

***Includes the following services:***

- Catchment Group Meetings
- Good Management Practices (GMP) information
- Newsletters
- Workshops and presentations
- Field Days

## Conditions of Membership

1. All information held on the database relating to this membership is confidential and shall only be used by Otago South River Care Incorporated
2. From time to time photographs of members taken at events will be used in promotional material of the organisation.

Signed: \_\_\_\_\_ Date: \_\_\_\_\_

**Bank Account Details;** Otago South River Care – 03 1734 0110166 000

Please return to [otagosouthrc@gmail.com](mailto:otagosouthrc@gmail.com) or Otago South River Care, PO Box 216, Balclutha 9240

Office Use Only:

Membership Approved:	Invoice #:	Payment Received:	Member #:
		Receipt #:	