

Find yourself, not other people in spectacular Clutha

Visit CluthaNZ.com/Trade

Welcome to the Clutha District

Clutha
Stay a while

Lying between Dunedin and Invercargill, the Clutha District is a true highlight along the world-class **Southern Scenic Route**.

For adventurous nature lovers, Clutha will reward you with wonders like the iconic **Nugget Point**, the famous **Cathedral Caves** and **Purakaunui Falls**, featuring an impressive triple tiered cascade.

Surf our pristine, untouched beaches, watch **wildlife** frolic in their natural habitat, or let us guide you to our local secret spots on an **eco-tour**.

For a dose of history, discover the story of **Gabriel's Gully** in the heritage town of **Lawrence**.

Leave your laptop at home and step onto one of our many **walking tracks** through coastal rainforest and dense native bush. Tick the mighty and majestic **McLean Falls** off your bucket list! From family-friendly one-hour loop tracks to advanced overnight trails and backcountry huts, you can truly disconnect here.

The **Clutha Gold Cycling and Walking Trail**, one of the *Ngā Haerenga Great Rides of New Zealand*, takes you on a scenic, historic journey alongside the country's largest and fastest river - the mighty Clutha Mata-au.

For a truly authentic taste of New Zealand's exceptional beauty and unique heritage, look no further than Clutha.

Contents

Page

4	Getting Here Southern Scenic Route Climate
5	Our Places
6	Top 10 Must Do's
7	Itinerary - Your guide to the ultimate Clutha Getaway
9	Waterfalls Golf Courses
10	Our Wildlife
11	Heritage and Culture
12	Surfing Hunting and Fishing
13	Walking Tracks and Trails
14	Lawrence
15	- Clutha Gold Cycling and Walking Trail
16	Map
18	Lawrence - Accommodation
22	- Tours
23	The Catlins
24	- Accommodation
28	- See and Do
31	Balclutha - Accommodation



For more information



Clutha i-SITE Visitor Information Centre

Phone +64 3 418 0388

clutha.vin@cluthadc.govt.nz

1 John Street, Balclutha

[Click here to take a virtual tour | Tourism NZ](#)



Instagram
Facebook
YouTube

@CluthaNZ
f/CluthaNewZealand
CluthaNZ

CluthaNZ.com

Getting Here

Flying to Clutha NZ

From Balclutha	Distance	Time
to Dunedin Airport	56 km	45 mins
to Invercargill Airport	129 km	1 hr 40
to Queenstown Airport via Central Otago	223 km	2 hr 50

Getting around the lower South Island - Drive Times

From Balclutha	Distance	Time
Gore	73 km	55 mins
Dunedin	74 km	55 mins
Invercargill	126 km	1 hr 35
Alexandra	140 km	1 hr 45
Oamaru	191 km	2 hrs 25
Te Anau	209 km	2 hrs 25
Wanaka	222 km	2 hrs 45
Queenstown	229 km	2 hrs 55

Getting around Clutha - Drive Times

	Milton	Balclutha	Owaka	Lawrence	Tapanui
Clinton	61 km (50 mins)	37 km (30 mins)	42 km (35 mins)	85 km (1 hr 5)	45 km (35 mins)
Tapanui	92 km (1 hr 10)	71 km (55 mins)	87 km (1 hr 10)	54 km (40 mins)	
Lawrence	37 km (30 mins)	54 km (40 mins)	85 km (1 hr 5)		
Owaka	56 km (45 mins)	31 km (25 mins)			
Balclutha	25 km (20 mins)				

Southern Scenic Route

This journey is a 610 kilometres touring route through Southern New Zealand. An array of natural and cultural attractions laid out one after the other – wildlife viewing, short walks, biking, fishing, hunting, boating, camping, tramping and caving – making it an ideal drive for those with time to explore.

Alternative inland roads provide a more direct path between the main centres, however the Southern Scenic Route is a journey that allows access to deserted beaches, lush rainforest, pristine lakes and stunning mountain vistas.

www.southernscenicroute.co.nz



Climate

In terms of warm and dry weather, the best time of year to visit Balclutha for general outdoor tourist activities is from mid January to late February, with a peak score in the first week of February.

Summer	Autumn	Winter	Spring
December - February Daily high 18 degrees daily low 10 degrees	March - May Daily high 10 degrees Daily low 4 degrees	June - August Daily high 11 degrees Daily low 3 degrees	September - November Daily high 16 degrees, daily low 9 degrees

The Catlins (see page 23)

One of New Zealand's finest eco-destinations swathed in lush rainforest, beautiful beaches, waterfalls, and wildlife.

- **Kaka Point** | This seaside village is famous for its surfing as well as one of New Zealand's most iconic lookouts - Nugget Point.
- **Owaka** | The Catlins' largest town - surrounded by rainforest, spectacular valleys, sandy beaches and a large tidal lake.
- **Papatowai** | Beautiful beaches either side of the beautiful tidal estuary, which comes alive when the red rata flowers spectacularly at the start of the summer.

Lawrence (see page 16)

The town of Lawrence was once the centre of one of The World's largest gold rushes, being the first gold rush town in Otago.

Balclutha

Clutha District's largest town sits on the banks of the mighty Clutha River with the Balclutha Bridge one of the south's best known landmarks.

Milton

A town with a passionate community boasting great independent shops from a butcher to quirky second-hand stores.

Waihola

Set on the edge of Lake Waihola, New Zealand's most inland tidal lake, famous for its mirror-like reflections and black swans lives between Milton and Dunedin in Otago.

Taieri Mouth

Taieri Mouth is nestled on the coast with the Taieri River estuary sweeping through a bush clad valley to meet the bright white sand at this lovely seaside fishing village.

Kaitangata

If you love the water then you will love Kaitangata or "Kai" as it is affectionately known for its boating, fishing and seasonal whitebaiting.

Tapanui

Tapanui, located in West Otago, is a friendly farming town with thriving independent shops, the Pomahaka River running through and the Blue Mountains providing a beautiful backdrop.

Clinton

Surrounded by gentle rolling hills, Clinton is a small rural town in South Otago famous for its sculpture of five Clydesdale horses representing the area's rich agricultural history.

Clydevale

Clutha Valley is primarily a sheep, beef and dairy farming area.



Top 10 - Must Do!



1 | Cross the Clutha on the Tuapeka Punt



2 | Ride the Clutha Gold Cycle Trail



3 | Soak in the views from Nugget Point



4 | Walk around Sinclair Wetlands



5 | Gold mining history at Gabriels Gully



6 | Waterfall hunt through The Catlins



7 | Visit the Cathedral Caves



8 | Fish in the Clutha River



9 | Visit a local museum



10 | Tee off at one of Clutha's golf courses

Your guide to the ultimate Clutha get away

4 Day+ Itinerary

Day One: Lawrence and Gabriel's Gully

You haven't seen the South until you've seen Lawrence, the site of one of the world's largest and fastest ever gold rushes, which swept through town and surrounding area in the 1860's. You still get a real sense of its rich history today. **Highlights:** Lawrence Information Centre and Tuapeka Goldfields Museum (\$); Bellview Wetlands; Lawrence Chinese Gold Camp; Weatherstons Brewery (\$ seasonal); Lawrence Golf Club (\$); Gabriel's Gully Interpretative Track; and Greys Dam.

Optional Additional Itinerary - Clutha Gold Trail

The best way to truly soak up the rich heritage of early New Zealand is to get out and about on the Clutha Gold Cycling and Walking Trail. You can start (or finish) the trail in Lawrence. It takes you through stunning landscape all the while following the mighty Clutha River. The 73km grade easy trail takes between two and four days to complete.

Day Two: Tuapeka Mouth, Kaka Point and Nugget Point

Don't miss a trip on Clutha's free ferry the Tuapeka Punt powered by the flow of the mighty Clutha River, running between 10am and 2pm (check the Facebook page for updates, as crossings are dependent on river levels). Kaka Point and Nugget Point is famous for its surfing and spectacular scenery, particularly from the iconic Nugget Point Lighthouse. Roaring Bay yellow eyed penguin hide.

Day Three: The Catlins - Owaka and Surrounds

Cannibal and Surat Bay which are renowned as some of the best places to see sea lions in The Catlins. Owaka is The Catlins' biggest town with a population of 400. Lush rain forest, spectacular steep valleys, amazing white sandy beaches and a large tidal lake surround this town. **Highlights:** Catlins Horse Riding (\$); Owaka Museum (\$); Earthlore Nature Tours and Activities (\$); Jack's Blowhole; Purakaunui Falls; and Purakaunui Bay.

Day Four: The Catlins - Papatowai to Curio Bay

Papatowai - enjoy the small settlement where forest meets the sea. **Highlights:** Tahakopa Beach; The Lost Gypsy (\$ seasonal); Florence Hill Lookout; Tautuku Bay; Lake Wilkie; Cathedral Caves (\$); McLean Falls; Curio Bay Petrified Forest; Catlins Scenic and Wildlife tours (\$).

View the full itinerary at CluthaNZ.com/Stayawhile



IT'S THE
REAL DEAL.

Waterfalls

Did someone say waterfalls? Well you are in the right place, with our wonderful world of waterfalls!

- **Matai and Horsehoe Falls and Rail Trail**

You can access the trail from Matai Falls, another beautiful waterfall in The Catlins.

- **McLean Falls**

McLean Falls is the highest of The Catlins' wonderful waterfalls and some say the most spectacular in the Southern region.

- **Purakaunui Falls**

Purakaunui Falls is one of The World's most photographed waterfalls, which has even been featured on a postage stamp.

- **Barr Falls**

While Barr Falls is one of the lesser known waterfalls in the area, you won't be disappointed.



Golf Courses

Balclutha Golf Course

For the avid golfer, look no further. The Clutha District is home to a number of golf courses from either 9 or 18 holes.

- **Balclutha Golf Club (18 holes)**

23 Golfers Drive, Balclutha
Green fees \$20 (9 holes)
\$30 (18 holes) per person

- **Allan Grange Golf Club (9 holes)**

Allan Grange Road, Clydevale

- **Tapanui Golf Club (18 Holes)**

67 Tapanui-Raes Jct Hwy, Tapanui

- **Heriot Golf Club (9 holes)**

Moncurs Road, Heriot
Green fees \$10 per person

- **Lawrence Golf Club (9 holes)**

27 Waipori Road, Lawrence
Green fees \$10 per person

- **Clinton Golf Club (9 holes)**

Merrie Creek Road, Clinton

- **Tokomairiro Golf Club (9holes)**

580 Back Road, Milton
Green fees \$20 per person

- **Owaka Golf Club (9 holes)**

Pounawea Road, Owaka
Green fees \$10 per person

- **Kaitangata Golf Club (9 holes)**

Wangaloa Domain Road, Kaitangata



Our Wildlife

Clutha is home to the world's rarest penguins the "yellow eyed", and the world's smallest the "little blue", the planet's most endangered sea lions and the smallest dolphins!

Yellow Eyed Penguins (Hoiho)

Thought to be The World's rarest and The World's most ancient penguins with just a few thousand in total, it is a special treat to spot these endangered penguins. The Yellow Eyed Penguin known as a 'Hoiho' in Maori is so iconic that it features on the New Zealand \$5 dollar note.

Little Blue Penguin

The world's smallest penguins are found all along the Catlins coast nesting in caves and burrows. They fish close to shore and come in after dark and go out before dawn so can be difficult to see.

Sea Lions (Hooker's Sea Lion or Whakahao)

New Zealand sea lions are the most endangered and threatened in The World.

Elephant Seal

These large earless seals take their name from the male or bull's nose which looks like an elephant's trunk.

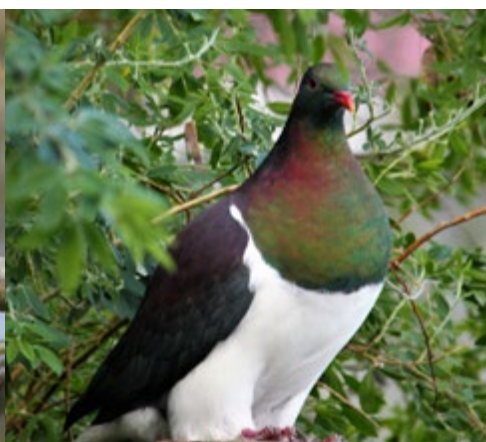
Best places to see sea lions in The Catlins: Nugget Point, Surat and Cannibal bays, Jack's Bay, Purakaunui Bay. You may also see fur seals at these spots, while elephant seals can often be seen at Nugget Point.

Hector's Dolphins

The World's smallest dolphins are around 1.5 metres in length and up to 60 kg in weight, with females being both slightly longer and heavier. Famous for their rounded dorsal fins, they look grey from a distance but are far more colourful.

Bird Life

Forest-dwelling birds include abundant Tui, Bellbird, Fantail, Tomtit, Brown Creeper and native Pigeon as well as the rare Mohua.



Heritage and Culture

Clutha District Museums

- **Owaka Museum, The Catlins** | Owaka Museum is a popular palace of memories, similar to walking through a 3D storybook. Tales of Maori settlements, shipwrecks and pioneer settlers is a true reflection of The Catlin's rich history. Phone: +64 3 415 8323 | www.owakamuseum.org.nz
- **Tuapeka Goldfields Museum, Lawrence** | This museum provides a great source of the discovery of gold by Gabriel Read in 1861 and fascinating displays depicting the lives of the early settlers to Tuapeka. Genealogy material and Miners' licence names available for researchers. Phone: +64 3 485 9222
- **South Otago Museum, Balclutha** | This museum has extensive collections on display of domestic and industrial heritage reflecting 150 years of pioneer endeavor on the fertile plains and river deltas of South Otago. Phone: +64 3 418 2382
- **West Otago Vintage Club, Tapanui** | The museum has a diverse range of items including vintage tractors, a steam engine, and a display of many household goods and collection of historical information from the West Otago area. Open weekends from 2 p.m. - 4 p.m. Phone: +64 3 204 8306
- **Tuapeka Vintage Club, Lawrence** | A display of Tuapeka's mechanical heritage, open every Sunday from 1pm to 4pm.

Heritage Sites

Goldmining: Otago's first gold-rush town was Lawrence. During the height of the goldrush the town's population was around 11,500; which was double that of Dunedin at the time. Here are some of the key sites:

- Blue Spur, Lawrence
- Gabriels Gully Interpretation Walk, Lawrence
Gold fossicking/Gabriels Gully - <https://www.doc.govt.nz/gold-fossicking/>
- Lawrence Chinese Camp, Lawrence
- Sod Cottage, Milton
- Weatherstons Brewery Heritage Site and Daffodils, Lawrence
Open seasonally during September/October.
- Lawrence Cemetery, Lawrence

Coalmining: Coal was first mined in Kaitangata back in 1869, coal was then taken through to Dunedin by rail. In 1879 there was a significant explosion at the mine in which it killed 34 miners. The last underground coal mine closed in 1970.

- Old Southern Cemetery and Tuckett Coal Box Memorial, Kaitangata

Other

- Tunnel Hill, The Catlins - The World's southernmost railway tunnel
- Milburn Whale and Dolphin Fossils Lookout, Milton - 24-34 million years old fossils found in the nearby lime quarry



Surfing

The Clutha District has some of New Zealand's best kept surfing spots. It gets colder down this area, so you will need to wear plenty of rubber! While the Clutha coastline is still largely undiscovered in surfing terms, it is known to have some of the most reliable waves. With many reef breaks along this coast, you will have enough to keep you riding for some time! The Catlins, being such an exposed coastline frequently experiences wild weather and heavy ocean swells which attracts big-wave surfers.

- **Taieri Mouth** is an exposed beach/river bar break that has consistent surf.
- **Kaka Point** (beginner to expert) is a beach break with rocky points. The wave is punchy and powerful.
- **Nugget Point** (beginner to expert) is a fairly consistent and sheltered beach break.
- **Cannibal Bay** (all levels) is a beach break with several peaks to choose from.
- **Catlins River Mouth** is an exposed beach break that has consistent surf.
- **Purakaunui Bay** (or PK Bay) is one of the more well-known beach breaks in The Catlins.
- **Long Point** (intermediate to expert) is a top rated left-hand point breakpoint break on a rocky point.
- **Papatowai** (experts only) is a favourite for big wave riders, with a quality beach break.
- **Tautuku** (all levels) is a beach break with several peaks to choose from with both left and right handers.
- **Porpoise Bay** (all levels) is a beach break with several peaks to choose from.
- **Curio Bay** (all levels) is a beach break at the southern end of Porpoise Bay.

Tours: Catlins Surf School, Curio Bay

For more information: <https://www.surf-forecast.com/>

Hunting and Fishing

Fishing in Clutha - We have some of the best fly fishing in New Zealand! With more than 25 rivers and streams within a hour or two, you are in the right place. For Trout and Salmon head to the Clutha, Waipahi, Pomahaka, Tuapeka and Catlins Rivers. Owaka, Waitahuna, Tokomairiro and Leithen Burn Rivers are other top freshwater fishing spots. If you want to get off the beaten track and catch yourself some perch, head to Lake Mahinerangi, located above Waipori. Make sure you get a fishing licence from your local information centre or try your luck surf casting on the coast.

Hunting in Clutha - There are many areas in the Clutha District for hunting a variety of species including deer, pigs and goats. There are several hunting blocks on Department of Conservation public conservation land throughout The Catlins, Coastal Otago and Inland, and the Pomahaka Conservation Area. Note: A permit is required to hunt on public conservation land which can be obtained online or from a DOC office.

Walking Tracks and Trails

There are so many wonderful activities in Clutha; we have picked a select few to feature. For more information about other available activities, or to find out if walks are open due to weather conditions or tides, contact one of our information centres or visit CluthaNZ.com/visit/activities-trail/

Balclutha

- 01 **Blair Athol Walkway** - Walk the banks of the Clutha River | 1 hr 30 return | Easy
- 02 **Sesquicentennial Track, Inch Clutha** - Coastal walk | 1 hr 30 return | Easy

Lawrence

- 03 **Gabriels Gully Interpretation Walk** - Gold heritage | 40 mins - 1 hr loop | Easy
- 04 **Clutha Gold Cycling and Walking Trail** - see page

The Catlins

- 05 **Nugget Point Lighthouse** - Dramatic coastal views | 40 min return | Easy
- 06 **Roaring Bay** - Yellow-eyed penguins viewing hide | 20 min return | Easy
- 07 **Tunnel Hill** - World's southernmost railway tunnel | 20 min return | Easy
- 08 **Purakaunui Falls** - Iconic triple-tiered waterfall | 20 min return | Easy
- 09 **Lake Wilkie** - Reflective and peaceful peat lake | 30 min return | Easy
- 10 **Matai Falls and Rail Trail** - Follow the old railway line | 30 min return and Rail Trail 1 hr return | Easy
- 11 **Cathedral Caves** - Descend through forest to sea caves | 1 hr return | Moderate | Seasonal restrictions | \$ | cathedralcaves.co.nz
- 12 **McLean Falls** - Catlins' highest waterfall at 22m | 40 min return | Easy
- 13 **Catlins River-Wisp Loop Track** - Forest lined river walk | Two 12km routes | Advanced 1-2 days (no huts)

Tapanui | West Otago

- 14 **Whisky Gully** - Walk through ferns and beech trees | 15 min easy loop or 2 hr return to waterfall
- 15 **Black Gully Track** - To the tops of Blue Mountains | 5 hr return | Advanced Marked route to tops
- 16 **Blue Mountain Walk** - Black Gully to Whisky Gully | 6-8 hr | Advanced Camping available at Black Gully

Milton, Waiholo and Surrounds

- 17 **Bull Creek** - Bush walk to a scenic reserve | 40 min return | Easy - moderate
- 18 **McNally Track** - Open country hike | 3 hr return | Moderate
- 19 **Taieri Millenium Track** - Follow the Taieri River | 4-5 hr return | Moderate
- 20 **Sinclair Wetlands** - Wildlife haven Several kilometres of easy well-maintained tracks



Welcome to Lawrence

Soak up the district's heritage in idyllic Lawrence. Stroll the streets and transport yourself back to the gold rush era. Boutique shops, quirky cafes, Victorian and Edwardian buildings, and an iconic museum line the town's main street. Once home to one of the world's largest gold rushes, Lawrence also boasted one of New Zealand's largest communities with a population double the size of Dunedin (around 250,000!). Learn the story of the first person to discover gold in 1861 at Gabriel's Gully, or visit the Chinese Gold Camp.

The beautiful Bellview Wetlands Reserve is a two-minute walk from the main street and offers scenic walking tracks surrounded by native bush and birdlife. Wander along the river's edge and ponder your next destination in Clutha. For the more active relaxers, Lawrence and Waitahuna both have 9-hole golf courses only a short drive from town.

Every year, Lawrence welcomes visitors to enjoy the delightful daffodil display. Thanks to the hard work of the local community, the Weatherston's Brewery site comes alive (quite literally!) every spring with a delightful floral display set across its 25 acres.

Every town is not without its famous residents and Lawrence is no different. A local schoolteacher in 1876 became the composer of the music for our country's national anthem. He is buried in the town's hilltop cemetery, which has become notable for its varied gravesites showcasing the town's diverse residents including elaborate Victorian ironwork, Celtic crosses, and a section for its former Chinese gold mining residents.

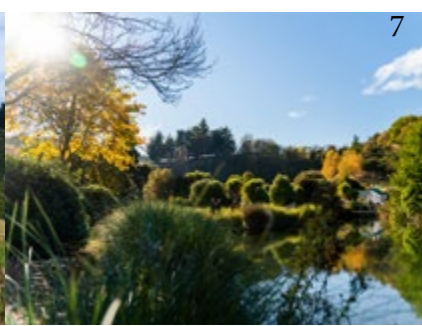
Book a stay in Lawrence once you've finished the Clutha Gold Cycle and Walking Trail. Embracing Otago's rich heritage and stunning scenery, the easy grade trail covers 73-kilometres and takes two to four days to complete. In 2023, a new trail extension will be opened allowing an additional 136-kilometre ride to Lake Waihola.

Top 10 things to do in Lawrence

1. Clutha Gold Cycling and Walking Trail
2. Gabriels Gully Interpretation Walk
3. Lawrence Chinese Camp
4. Greys Dam
5. Tuapeka Vintage Club (open Sundays)
6. Tuapeka Goldfields Museum
7. Bellview Wetlands (open weekends)
8. Weatherstons Brewery and Daffodils (open Spring)
9. Lawrence Cemetery
10. Lawrence Golf Course



2



7



6





Thousands of visitors every year experience the 73-kilometre bike trail, the Clutha Gold. Soak up the history of early Otago and witness the region's stunning scenery as you wind along the Clutha Mata-au River. Explore the stunning riverside scenes of the Teviot Valley between Lake Roxburgh and Lawrence.

If you fancy an additional 4-6 hours of adventure, the trail links with the Roxburgh Gorge Trail. Soon, the trail is set to get even bigger and better, with the route being extended up to 136 kilometres all the way to Lake Waiholā in 2023.

Afterwards, rest up in Lawrence, Otago's original gold town. Stroll around this quaint spot with its proud history and wonderful architecture and follow in the steps of Chinese gold miners and pioneer settlers.

For more information on the trail, visit the Official Website www.cluthagold.co.nz

Lawrence Bike Transfers

Our late model Mini Buses and Custom Built Trailers can carry up to 20 people with bikes. We are servicing the 'Clutha Gold Cycling & Walking Trail' dropping you or your group off at your choice of location as listed below: Lawrence to Beaumont, Millers Flat, and Roxburgh. We can also transfer to Alexandra, Clyde and Middelmarsh.

Bookings Essential | Preferably 24 hours notice. For a complete package stay at our luxury Mata-au Lodge, Lawrence Townhouse or Oban Guesthouse.

Hosts: Mark Robertson and Jude Gamble

Phone +64 3 485 9127

info@absolutelylawrence.nz

www.absolutelylawrence.nz



Clutha District Map and Town Maps

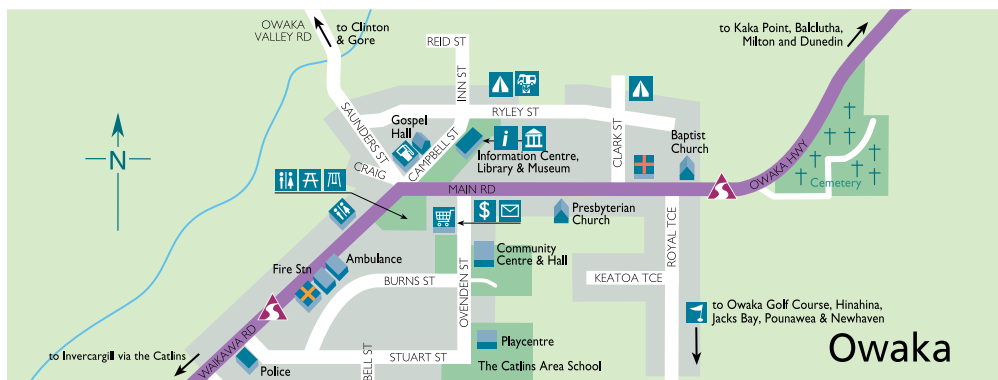
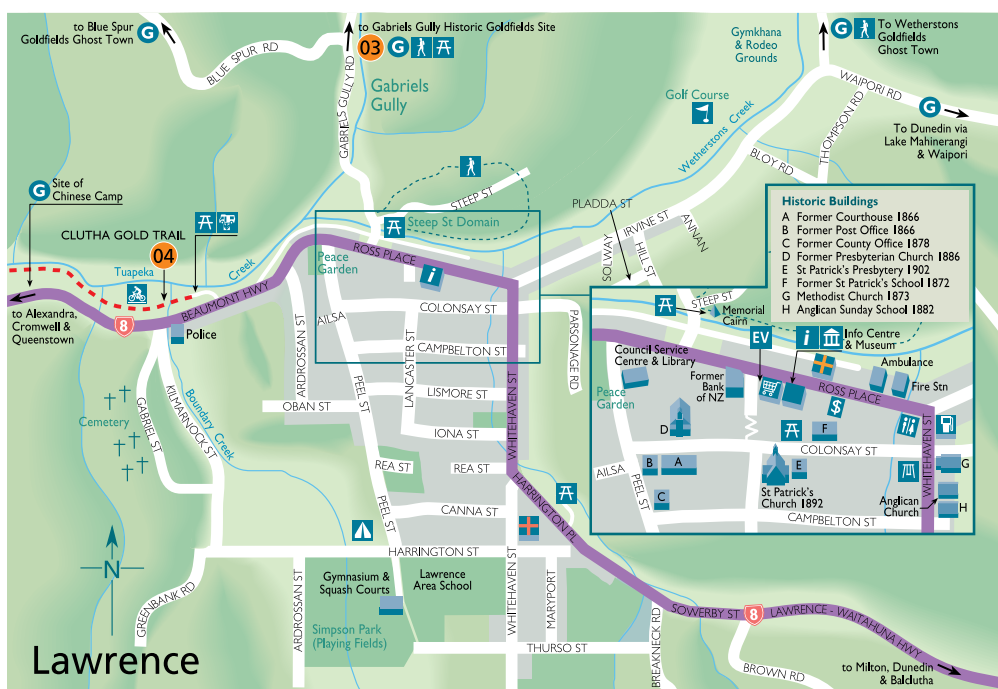


Information Centres Call into one of our local Visitor Information Centres - they have a wealth of knowledge on

Clutha i-SITE Visitor Information Centre
1 John Street, Balclutha

Catlins Information Centre
10 Campbell Street, Otago

Milton Information Centre
53 Union Street, Milton



local activities throughout the Clutha District, as well as accommodation bookings, dining options and more.

Lawrence Information Centre
17 Ross Place, Lawrence

Tapanui Information Centre
1 Suffolk Street, Tapanui

Cascade Creek Retreat



Cascade Creek Retreat is a luxurious 5 Star, eco-friendly, boutique accommodation set on a 2000 hectare award winning working sheep and beef farm in Otago at an exclusive, private and remote location. A very special Holiday Home in NZ which holds both of Qualmark's accolades of 5 Star and Business Sustainability Gold awards, Cascade Creek Retreat is the perfect spot for honeymoons, romantic getaways, family holidays or independent travellers wanting the chance to experience a taste of real NZ.

Just 30 minutes from Dunedin International Airport, 50 minutes from Dunedin city, 50 minutes from the Catlins and 1 hour from Central Otago. Cascade Creek Retreat is an authentic hand-crafted Oregon log chalet with solar and hydro powered electricity (100% off the grid!), gas for hot water and cooking, a large open fire to roast marshmallows on, numerous private walking tracks that leave directly from the Retreat and abundant native birdlife to view in the immediate surrounds.


Guests can choose from the delicious Gourmet self-prepare meal options (including main, side, dessert and wine) to enhance the privacy and serenity of the Retreat; or they can truly indulge with their own personalised Chef who will arrive and cook a homestyle gourmet 3 course meal in their own log cabin for the night.


The intimate size of the Retreat sleeps up to 6 people and provides 2 super king beds and a queen bed all offering platinum sheets, luxurious bath robes and towels. Walking tracks varying from 5 minutes to 1 day leave directly from the Retreat. A perfect way to finish off the day at Cascade Creek Retreat is a soak in the steaming hot outdoor baths while enjoying the serenity and seclusion that it offers.



CONTACT

Manager – Sophie McIntosh
Owners – Janene & Dave Divers
Glen Road, Milton Otago 9291
Phone: +64 027 216 7210
enquiries@casadecreekretreat.co.nz
www.casadecreekretreat.co.nz

 2 x super king beds
(or 4 king singles)
1 x queen 'wall' bed

 Sleeps 6





Pickled Pigeon Cottage

The exact date of construction is unknown however it is shown in photographs at its present site, circa 1870's. It is believed originally to be a surveyor's cottage which was moved to this site from the Blue Spur township near Gabriel's Gully. Undergoing continual restoration, this three bed-roomed cottage is nestled quietly in an exquisite cottage garden which attracts many birds including the native Wood Pigeon, NZ's Bird of the Year in 2018. Free WiFi, off street parking, full laundry facilities and two sources of heating (wood fire and heat pump) are all included. Cook in the well-appointed kitchen, BBQ in the scented garden or wander down to the village eateries, the choice is yours. The cottage is within easy walking distance of the shops and cafes of Lawrence.

Hosts: Penny Archer and Neen Welsby
Lismore Street, Lawrence 9532
Phone +64 210 8411951
info@pickledpigeon.com
<https://www.pickledpigeon.com/>



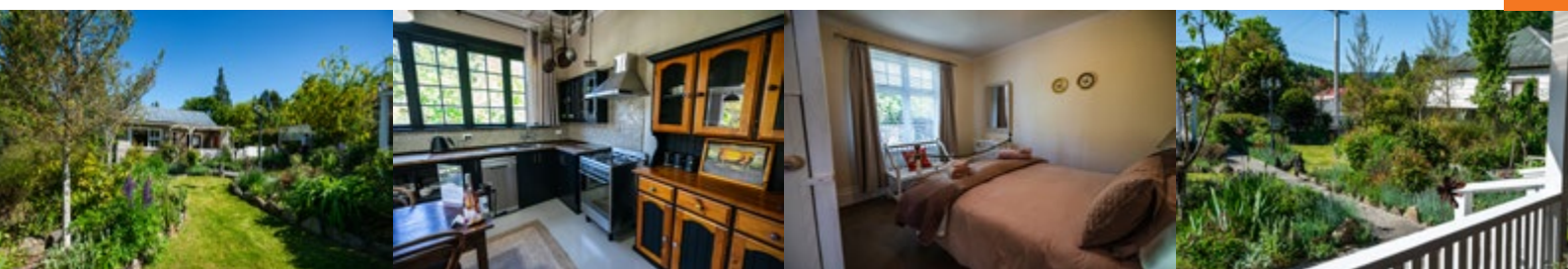
3 rooms



1 x queen
1 x double
1 x single



Sleeps 5



Goldpark Motorcamp

A family friendly camping ground located in the picturesque Clutha District at the edge of the historic town of Lawrence. Goldpark is established on 10 acres landscape of lush green trees, a garden like campground with a gentle creek running through it.

Goldpark is currently offering 30 powered sites, 6 Cabins with different sleeping arrangements and plenty of non-powered sites. Communal facilities include showers, toilets, laundry, mini-library and a kitchen.

+64 225 90 80 90
1 Harrington Street, Lawrence 9532
ask@goldpark.co.nz
<https://www.goldpark.co.nz/>



The Prospector

The Prospector offers comfortable budget accommodation in the heart of Lawrence. We offer a choice of en-suite twin singles and Queen bedrooms. We can accommodate 16 guests which makes The Prospector an ideal choice for small groups. For groups we can offer a Dinner, Bed and Breakfast packages. Meals are served in our licensed Cafe. Please contact us for pricing and menu options. We look forward to welcoming you to Lawrence.

Host: Fiona Anderson
12 Ross Place, Lawrence
Phone +64 3 4859 595 | +64 27 4859 595
theprospector.lawrence@xtra.co.nz



4 rooms



5 beds



Sleeps 8



Mata-Au Lodge

Mata-Au Lodge

BEAUMONT, CENTRAL OTAGO

A brand-new holiday home and wedding/event venue located in a peaceful riverside setting in the heart of Otago. Mata-Au Lodge provides the perfect retreat after a day on the bike or as great family/group accommodation for a holiday or weekend away. With 5 bedrooms in the main house, plus an additional bunk room sleepout. With lots of space for everyone and a great outside deck overlooking the river you can relax and unwind. Cooked or Continental Breakfast Options; Self Drive Van Available; 10 Seater Spa & Massage Chair BBQ Packs; Catered Evening Meals / Packed Lunch Options; Discount for Larger Groups & Longer Stays.

Hosts: Mark Robertson & Jude Gamble**39 Rongohere Rd, Beaumont****Phone: +64 3 456 789**stay@beaumontaccommodation.com<https://www.beaumontaccommodation.com/>

5 rooms

5 x queen
2 x single

Sleeps 10



Lawrence Townhouses

With three self-contained units, you'll be able to relax and unwind in Lawrence, with plenty of space and all the comforts of home. The three units are all recently built and fully furnished throughout, featuring a spacious lounge with large couches and flat screen TVs. The double-glazed windows and heat pumps, as well as heaters in each bedroom, will ensure your stay is comfortable all year round.

Each unit features three bedrooms which include two queen-size bedrooms (one with en suite bathroom) and one bedroom with two king-single beds. Linen and towels are all provided and units are serviced on request. Unit 1 has sofa beds for additional guests, unit 3 has a spa pool, and all units have massage chairs.

Hosts: Mark Robertson & Jude Gamble**16 Colonsay Street, Lawrence****Phone: +64 3 485 9127**info@absolutelylawrence.nz<https://www.absolutelylawrence.nz/>

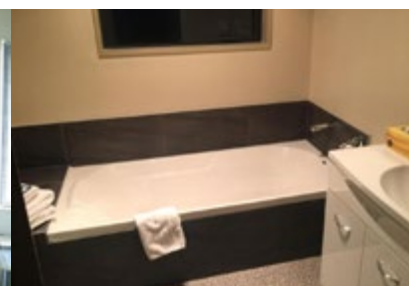
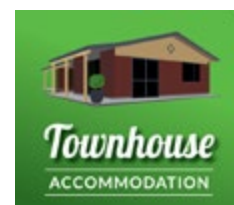
3 units



12 beds



Sleeps 18



Brooklands NZ

Nestled in the valley on Hunt Road sits this gorgeous farm house, it is the perfect setting to relax, unwind and enjoy the beautiful surroundings. It is a short ten minute drive to Lawrence.

Brooklands is a stunning property inside and out with all the amenities you need when on a getaway, whether it be a family holiday or a rail trail adventure with friends.

Host: Lisa and Paul Wilson
355 Hunt Rd, RD1, Lawrence 9591
brooklandsnz@outlook.com
www.brooklandsnz.co.nz/



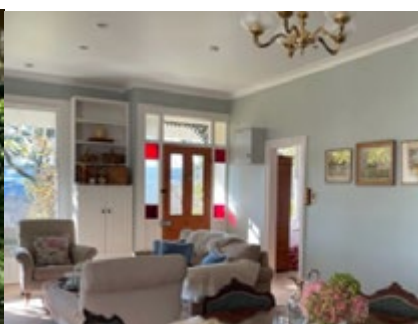
3 rooms



3 beds



Sleeps 6



Jafa's Motels

Modern and Spacious Accommodation in Lawrence. Jafa's Motels offer superb recently built accommodation, which was designed to blend in with the heritage of the town. The modern, spacious units are well-appointed and tastefully decorated.

3 x king studio units
 2 x 1-bedroom family units

Hosts: Susan and Trevor Duncan
4 Lancaster St, Lawrence
Phone: +64 3 485 9005
info@jafaslawrence.co.nz
www.jafaslawrence.co.nz



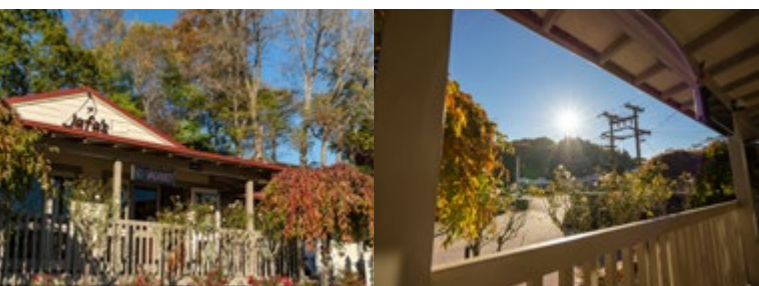
5 units



7 beds, 2
sofa beds



Sleeps 16



Hunter Farm Stay

Hunter Farm boundaries the Clutha River and whilst most of our farm is rolling hill country, we have 100 acres of flat land down by the river with our own river access. Accommodation is within our own villa homestead. Guests have a large private room to enjoy with a toilet. The room has a patio that enjoys farm and garden views. Guests can enjoy a home cooked evening meal by arrangement.

Hosts: Pam and Graham Hunter
202 Kononi Road, RD1 Lawrence, Otago
Phone +64 3 485 9567
pamhunter202@gmail.com
www.hunterfarmstay.kiwi.nz/



1 room



3 beds



Sleeps 4



NZ Agency Tours

NZ Agency Tours is part of a larger international tour operator called "Te-Ra Discovery Tours". We have been specialised in tours and holidays for international travellers for about approximately 15 years.

• Catlins Wilderness Day Tour

Discover the untamed beauty of New Zealand's Catlins coastal area. A remote and untouched final frontier and a true natural paradise. This full day tour will allow you to discover the natural wonders and history of the Catlins. Our experienced driver guide will take you on an in depth tour of what the region has to offer. Providing commentary and stories along the way. Explore the Catlins travelling by small bus. Learn all about the area's history, flora and fauna and much more. The tour will include a few short walks, impressive lookouts, visiting a local and unique art gallery. Discovering local landmarks and natural gems. Pristine untouched beaches, the southern ocean, native rainforests and waterfalls. And we will always be trying to spot some local wildlife along the way! Lunch is included at a local cafe/restaurant.

• Lawrence Heritage Day Tour

Discover the original gold mining town of the South Island. Lawrence is a true Otago hidden gem where gold was first discovered in 1861 and sparked the famous South Island gold rush. Take a trip back in time on our full day heritage tour guided by one of our expert guides sharing the local history and many stories from back in the day. The township is unique and charming with a variety of heritage buildings and historical locations. Explore Lawrence and Gabriel's Gully travelling by small bus and learn all about the area's rich heritage and much more along the way. Lunch is included at a local cafe/restaurant.



CONTACT

Host: Oli Ramanoel
 17 Karoro Creek Road, Kaka Point 9271 New Zealand
 Phone +64211120042
oli@tera-tours.com
www.nzagency.co.nz/



Welcome to The Catlins

Welcome to one of the country's finest eco-destinations - The Catlins.

To experience somewhere remarkable and off the beaten path, The Catlins is a true highlight of the Southern Scenic Route.

The 100-kilometre stretch of coastline straddles the boundary between the Otago and Southland regions, and is home to lush rainforest, golden beaches, and diverse wildlife.

You don't have to travel far to immerse yourself in dense virgin rainforest, abundant with native rākau (trees), triple-tiered waterfalls, and the soundtrack of the sweet song of the tūī and korimako bird.

From the forest to the sea, the coastline boasts epic cliffs and famous sea caves, all part of the rugged splendour. Watching the world's rarest penguins and dolphins playing in the surf, or witnessing fur seals and endangered sea lions lounge in their natural habitat, complete the stunning and serene experience.

Toitū te whenua – leave the land undisturbed.

The Catlins is a pristine paradise and its local community appreciate that every visitor respects the area - let the Catlins captivate you.

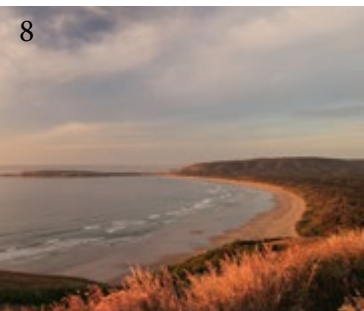
Top 10 things to do in The Catlins

1. Nugget Point Lighthouse (DOC, Free)
2. Purakaunui Falls (DOC, Free)
3. McLean Falls (DOC, Free)
4. Cathedral Caves (seasonal, \$)
5. Curio Bay
6. Surat Bay
7. Owaka Museum (\$)
8. Florence Hill Lookout (DOC, Free)
9. Roaring Bay - Yellow-eyed Penguin Hide (DOC, Free)
10. Purakaunui Bay

6



8



4



10



1



Mohua Park Catlins Eco Accommodation



Treat yourself to a little luxury in one of our four eco friendly cottages, where you'll enjoy seclusion and uninterrupted views. Book as a Self Catered stay or as a Bed & Breakfast stay. Take your pick from four spacious king studio eco cottages, all offering privacy in a natural bush setting. Each cottage has incredible views overlooking lush rolling farmland and the stunning bush of the Catlins Valley.

Relax in your own private hideaway. Set among native bush, overlooking lush rolling farmland and stunning bush on the Morris Sadle. Each cottage has all the comforts you'll need for a comfortable stay. Stylish, modern and fully equipped. Unwind on your private deck taking in the beautiful scenery in a tranquil setting. Perfect for romantic getaway for couples, equally a perfect family holiday destination.

- Kahu Cottage (sleeps 2 - 1 king)
- Karearea Cottage (sleeps 4 - 1 king, 2 singles)
- Korimako Cottage (sleeps 4 - 1 king, 2 singles)
- Riroriro Cottage (sleeps 4 - 1 king, 2 singles)

Mohua Park have consciously made sustainable choices in the planning and rebuild of the property, creating an environment that allows people to connect with nature. They have achieved this by: the materials chosen for construction, designing buildings to complement the landscape, and have setup practices for waste reduction, energy and water savings. They encourage guests to actively participate in these practices because they respect nature and are passionate about sustainable living.



CONTACT

Hosts: Tracy & Mike Bell
 744 Catlins Valley Road, Owaka
 Phone: +64 3 415 8613
hello@catlinsmohuapark.co.nz
www.catlinsmohuapark.co.nz



4 cottages

10 beds

Sleeps 14





Beresford Heights

Located at the top of Table Hill, 400m above sea level in the heart of The Catlins. Beresford Heights is a fully self-contained boutique lodge capable of sleeping up to four people with a king size bed and sofa bed available. There is a comfortable seating area for relaxing, reading or taking in the panoramic views as well as a full kitchen. A continental breakfast is provided. For dinner, self-cater or treat yourself to a Beresford Bundle full of local delicacies to cook yourself, accompanied by homemade salads, delivered to your door. Fully catered meals are available by your host if arranged prior to your arrival. There is a great deck running the length of the lodge which features a lovely hot tub and sweeping panoramic view.

Hosts: Warren and Stephanie Burgess
361 Puketiro Road, RD2, Owaka
Phone: +64 3 415 8019
info@beresfordheights.nz
www.beresfordheights.nz/



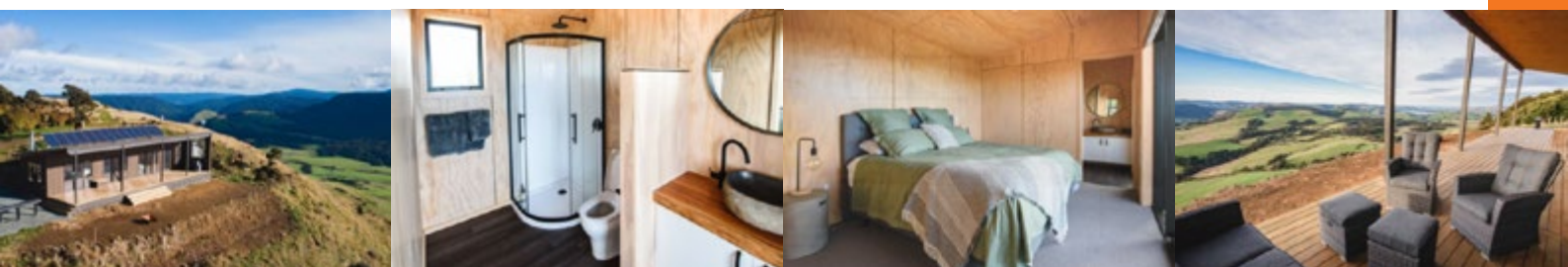
1 lodge



2 beds (1 x king, 1 x sofa bed)



Sleeps 4



Skylark Bed and Breakfast

Luxurious super-king with en-suite unit with private entrance adjoining our house, on a 1500 acre Sheep & Beef farm with stunning views of the Catlins Lake and Pacific Ocean.

It's quiet and peaceful so that you can hear the skylark birds singing in the mornings. The stars and galaxies are spectacular to view from your bed and the sunrises. Farm drive to Narnia film location/moving stock included.

Hosts: Melanie and Karl Burgess
Phone: +64 3 415 8846
lakeedgefarm@gmail.com



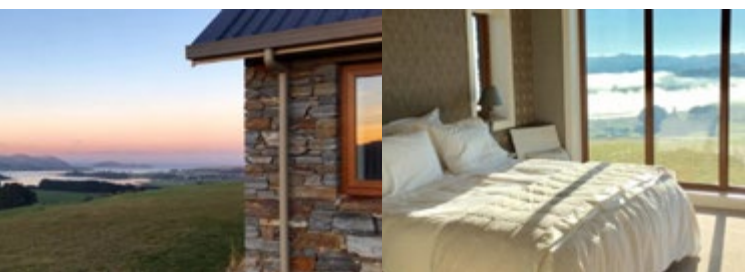
1 private room



1 bed



Sleeps 2



Surat Bay Lodge

Surat Bay Lodge is a friendly hostel situated in New Haven on the edge of the Catlins Estuary right next to a beautiful beach (Surat Bay) inhabited by native NZ Sea Lions. Private Rooms: 2 x Double with sea view (Queen); 1 x Twin with sea view (2 singles); 1 x Twin with mountain view (2 singles); 2 x Family with sea view (Queen and Bunk beds). Mixed Dorm: 8 Bed dorm with sea view.

19 Surat Bay Road, New Haven 9585
Phone: +64 3 415 8696
suratbaylodge@gmx.com
<https://suratbay.co.nz/>



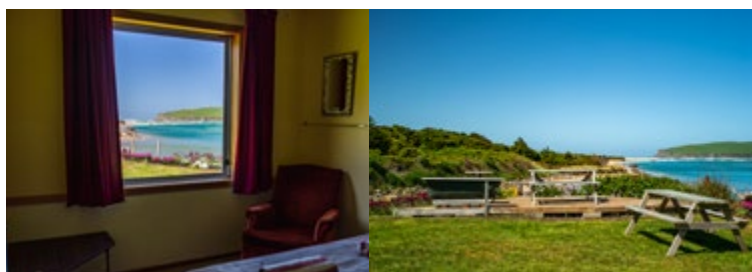
6 private rooms,
1 dorm



20 beds



Sleeps 24





Seascape Accommodation

Seascape Accommodation in Kaka Point offers quality, modern accommodation with spectacular ocean views out to the Nugget Point Lighthouse. Laura and Chris welcome you to their accommodation in Kaka Point, where you will be well-placed to explore one of the last frontiers of tourist destinations in New Zealand.

We offer quality, modern furnished accommodation: either a self-contained unit (apartment style) with cooking facilities or studio unit with breakfast facilities, both with fantastic sea views.

Hosts: Laura and Chris
8 Marine Terrace, Kaka Point
Phone: +64 27 367 2208
stay@seascape.co.nz
www.seascapekakupoint.nz/



3 units



3 beds, 2
sofa beds



Sleeps 10



Tiromoana

Situated on the top of farmland, nestled amongst established native plantings, yet open to views which are simply stunning.

Tiromoana is fully self contained accommodation just five minutes south of Owaka and within close proximity to the magnificent attractions offered within the Catlins area.

Host: Tracey Hancox
67 Hanning Road, R D 2, Owaka
Phone: +64 27 212 0033
tracey_rangi@xtra.co.nz



4 rooms



5 beds



Sleeps 8



Kaka Point Campground

We are a family owned camping ground surrounded by Mature Native Podocarp forest. An Ideal place to start exploring the Catlins We are the closet campsite to Nugget Point and the Clutha river mouth.

We have 35 power sites and 15 non powered. We have space for larger vehicles, there are also hard stands available. 4 cabins available, 2 are family with a double bed and bunk set, and the other 2 contain a queen bed.


34 Tarata Street, Kaka Point 9271
Phone +64 27 408 2774
info@kakapointcamping.co.nz
<https://kakapointcamping.co.nz/>

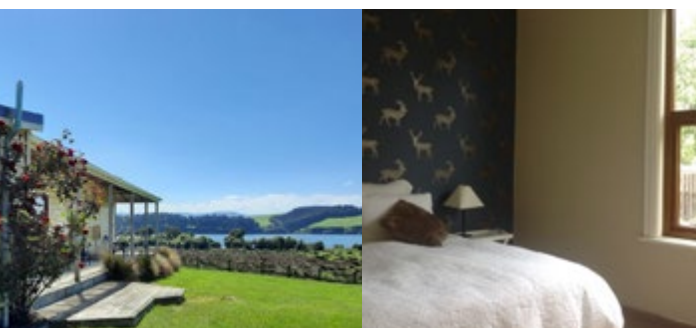


Lakeside Cottage

A homely 112yr old warm cottage that was our family home for 18 years before we built further up the hill. Fully renovated, this cottage is situated on our sheep and beef 1500 acre farm, and is beside Catlins Lake.

Hosts: Melanie and Karl Burgess
87 Lake Side Road, Owaka 9586
Phone: +64 3 415 8846
lakeedgefarm@gmail.com

 3 rooms  4 beds  Sleeps 6



Catlins Newhaven Holiday Park

Eco friendly, off the beaten track, Kiwi owned and operated - award winning seaside camp for nature lovers. Blessed with beautiful sea views, inspiring scenery, quiet and peaceful environment on the Catlins Coast at magical Surat Bay - home to the critically endangered NZ sea lions.

Accommodation includes: Self contained Tourist Flats; Comfortable Chalet Cabins; Powered sites; Retro caravan with chalet awning; Tent sites.

324 Newhaven Road, Owaka 9585
Phone +64 3 415 8834
newhavenholidaypark@gmail.com
www.catlinsnewhavenholidaypark.com/



Kaka Point Motel

Karen and Blair welcome you to The Nugget View Kaka Point Motel, where our aim is to ensure you enjoy your stay in The Catlins. It is a 5-minute walk to the swimming and surfing beach, and just 2km from the Nugget Point Lighthouse coast. With spectacular coastal views, our motel can accommodate you with 1 and 2-bedroom units, studio/hotel units.

24 Rata Street, Kaka Point
+64 3 412 8602
nugview@catlins.co.nz
<https://www.catlins.co.nz/>



Kepplestone By The Sea

Offering a continental breakfast each morning, it is just 100-metres' walk to the beach where sea lions and seals can be seen year-round. It is 5-minutes' drive to the Owaka golf course and 9-minutes' drive to Owaka, where you will find shops, cafes and restaurants.

Kiwa ensuite with sea view, has a queen size bed; Kupe ensuite with garden view, has King size bed.

Hosts: Ester and Jack Johnson
9 Surat Bay Road, Owaka 9585
+64 3 415 8134
kepplestone@xtra.co.nz
www.kepplestone.co.nz/



Catlins Tours

Take one of our guided scenic and wildlife tours and see the best of what The Catlins has to offer.

Sunrise Tour - 3-4 hours

- See Yellow-eyed penguins going out to sea;
- Private location & Bay to view Penguins;
- Explanation of various landmarks and points of interest;
- New Zealand Fur Seal viewing;
- Sea Bird viewing

Beach, Bush & Waterfall Tour - 5-6 hours

- Visit Cannibal, Purakaunui, Tautuku Bays;
- May have encounters with Sea Lions;
- Florence Hill Look Out;
- Lake Wilkie;
- Purakaunui, McLean and Matai Falls;
- Nugget Point Lighthouse

Catlins Coastal ATV Experience - 3-4 hours

Tour over lush coastal farmland. Guide will point out landmarks and points of interest, farming practices etc, driving along the cliff tops, incredible coastal vista's, rolling countryside, making our way down the wide-open spaces of the beach. ATV drive along the surf on the beach with, dramatic windswept trees, sea birds, great photo opportunities.



CONTACT

Hosts: Gill & Lyndon Mckenzie
2390 Owaka Highway, Katea, RDI 9271
Phone +64 211 217 028
info@catlinstours.co.nz
<https://www.catlinstours.co.nz/>



Endorsed by QUALMARK



Immerse yourself in the stunning Catlins' scenery and take pride in knowing you are doing your bit to help our native birds, beach and bush - so you can enjoy the wonders of the The Catlins and leave knowing it is a better place because of your visit.

Fun for the whole family - Our nature based activities are fun for everyone from five to one hundred and five.

- **Give back to nature tours** - a three day, small group tour of The Catlins where you will work to create habitat for our unique wildlife, experience nature in the night time and see out-of-the-way places.
- **5 hour nature tour** - a half day, small group tour where you will work to create habitat for yellow-eyed penguins, have a picnic on the beach and visit a local conservation project.
- **Earthlore Tour** - Take part in our Wildlife Guardianship workshop to learn how to interact safely with our wildlife, meet Inspector Insector to learn about his work with schools, tour our developing food forest and conservation habitat.
- **Family Tour** - Play mini frisbee golf, solve the insect murder mystery, watch the Flea Circus puppet show, meet the donkeys and check out our Gypsy caravan for lots of fun-fun-fun!
- **Bat-walk** - On this two hour tour we will take you to a survey area where bats are known to fly over at dusk, giving you the best possible chance to hear and possibly even see these incredible little creatures.



CONTACT

Hosts: Gordon and Janine Thompson
129 Hinahina Road, RD 2 Owaka 9586
Phone: +64 3 415 8455
earthlore3@gmail.com
www.earthlore.co.nz



Catlins Horse Riding

“Personalized horse riding to suit you”. Based on ‘Te Taunga’, a 660 hectare certified organic sheep and beef farm in The Catlins, making it a great location for experiencing the coastal Catlins on horseback, with spectacular views of surrounding farmland, ruggedly beautiful Pacific Ocean coastline with golden sandy beaches, rivers, estuary and inland to The Catlins.

We can cater for individuals, couples, families, small groups and anyone with an adventurous nature. Tours include: a 1 hour wonder, relaxing 1 hour, 2 hour farm ride, 3 hour farm/beach ride, 2 hour beach ride, 3 hour beach ride or full day (5-6 hours riding).

41 Newhaven Road, New Haven 9585

Phone +64 27 629 2904

catlinshorseriding.co.nz

catlinshorses@outlook.com



The Lost Gypsy (Seasonal)

A Playground for Adults - The Lost Gypsy Curios & Coffee is an automata gallery and theatre experience created from the ground up by New Zealand artist Blair Somerville. A wonder-filled world of moving mechanical devices, from small to large automata, to interactive experiences.

Grab a delicious coffee and a snack from Carol at The Little Rocket coffee caravan.

2532 Papatowai Highway, Papatowai

bscoop14@gmail.com

www.thelostgypsy.com



Catlins Brewery (by appointment)

Catlins Brewery is based at Kaka Point in the Catlins region of heartland New Zealand. They use all locally-sourced ingredients (like Gladfield Malt and New Zealand Hops) from the South Island of New Zealand to produce a damned fine drop of beer and cider. Need we say more? If you're in Kaka Point you can try our range at The Point Cafe and Bar or stop into Clutha Liquorland.

3 Brighton Street, Kaka Point

Phone: +64 3 412 8661

info@catlinsbrewery.co.nz

www.catlinsbrewery.co.nz



Rosebank Lodge

Located on the southern hill of Balclutha, the Rosebank Lodge is our superior hotel offering a "One Stop" shop, just 10 minutes' walk from the town centre.

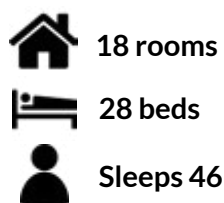
Rosebank Lodge features rooms with garden views. The venue comprises 18 guestrooms each room has a private balcony. The Rosebank Lodge also has a dining restaurant "Picasso's", and Rosie's Bar & Bistro with external beer garden.

265 Clyde Street, Balclutha 9230

Phone +64 3 419 0021

rosebanklodge@clt-trust.co.nz

www.rosebanklodge.co.nz



Highway Lodge Motel

Lynn and Neil welcome you to the Highway Lodge Motel, where you can relax in comfort. They offer affordable comfortable accommodation, a choice of 16 self-contained units – studio, 1, 2 and 3-bedroom units: warm units with double-glazing; heat pump air-conditioning; full kitchen facilities; ensuite bathrooms, one with spa bath and some units have wheelchair access

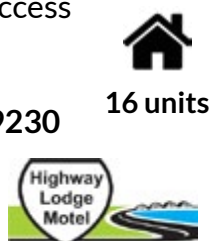
Hosts: Neil and Lyn Fox

165 Clyde Street, Balclutha 9230

Phone +64 3 418 2363

highwaylodge@xtra.co.nz

www.highwaylodge.co.nz



Fern and Thistle Accommodation

The Fern and Thistle is a luxury Bed and Breakfast, and wedding/function venue catering to visitors and locals alike that want a premium, private experience and a taste of history at the old Lesmahagow Homestead in Benhar. Built in 1914 and lovingly restored to its former glory, the villa sits on 6,000m2 of private landscaped gardens.

Host: Matt Brooking

146 Benhar Road RD 2, Balclutha

Ph: +64 22 199 6955

fernandthistlenz@gmail.com

fernandthistle.co.nz



Contact

Sarah Homer
Sector Enablement Manager
sarahhomer@cluthanz.com
+64 27 777 7157

Libby Hindmarsh
Destination Marketing Manager
libby@cluthanz.com
+64 27 4589300

**16 James Street, Balclutha,
Clutha District, New Zealand 9230
Phone +64 3 418 4048**

CluthaNZ.com

